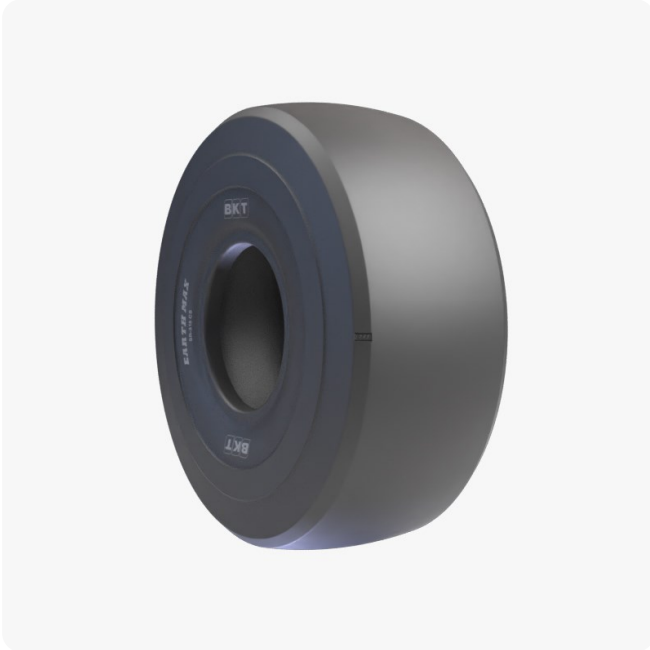


EARTHMAX SR 315 CS - Data Sheet



Description

EARTHMAX SR 315 CS L-3S is an All Steel radial tire specially designed for loaders' front axles with chains in mining operations. The special tread contour with a Chamfered Shoulder (CS), allows tire chains to be better fitted along the tread surface including the shoulder area. Its Overall Diameter after chain application matches the one of BKT EARTHMAX SR 55 L-5S fitted on the rear axle, for a close match of front and rear tires. EARTHMAX SR 315 CS is designed to eliminate the risk of front tire damage during digging operations with LHDs (Underground Load Haul Dump) and loaders.

UM

US Standard

Construction

 RADIAL

Machinery

OTR: Load Haul Dump (LHD) • Loader

SIZE	Version	USACode	TRA Code	Star R	LI/SS	RIM REC	RIM ALT	OW	OD	SLR	RC	Type
29.5 R 29	CUT RESISTANT COMPOUND	94069378	L3S	**	218 A2	25.00/3.5	24.00/3.5	30.7	74.4	33.1	225	TL
35/65 R 33	CUT RESISTANT COMPOUND	94070992	L3S	***	229 A2	28.00/3.5	-	34.6	76.7	34.1	231.7	TL
35/65 R 33	CUT RESISTANT COMPOUND	94069385	L3S	**	224 A2	28.00/3.5	-	34.6	76.7	34.1	231.7	TL

Printed on 4/22/2024 5:51 PM

All product data contained in this publication are for information purposes only and may be modified at any time without prior notice. Balkrishna Industries Ltd. or any of its subsidiary companies does not undertake any responsibility or liability for undetected errors and/or misprints. All rights reserved. The materials and contents of this publication and the website are the exclusive property of Balkrishna Industries Ltd. and are protected by industrial and/or intellectual property laws. The user is not permitted to copy, reproduce, transfer, upload, make use of, publish or spread any contents, in whole or in part, on paper format, electronic format or otherwise without prior written consent by Balkrishna Industries Ltd..